

NEXT CENTURY, NEXEN

# 1 INTRODUCTION



COMPANY	NEXEN
CEO	TRAVIS KANG
BUSINESS	TIRE, TUBE, OTHERS (PRODUCTION & SALES)
FOUNDATION	1968
EMPLOYEE	10,000
HQ	SEOUL, KOREA



# 4 PRODUCT - SOLID TIRES

Resilient Type

4" ~ 24"



Premium - NEXEN SOLIDPRO 700



Standard - ALLPRO

Press-On Type

4" ~ 22"



Premium - NEXEN SOLIDPRO (Traction)



Premium - NEXEN (Smooth)

# 7-1

## TIRE LIFESPAN

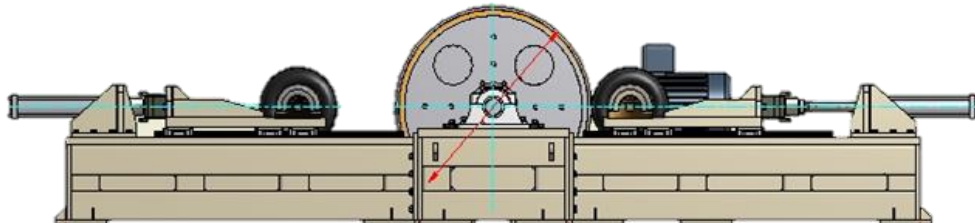
### Endurance

#### Test Conditions

- Speed : 6km/h (Constant speed)
- Load factor : International regulation 100% → up to 160%
- Ambient Temp. : 25 °C ± 5 °C

#### Tester Capacity

- Up to 30 inch & 20 Ton
- Max 50 km/h
- Temp, Deflection, RRC
- Full Automatic
- Room Temp : Up to 50 °C



**NEXEN**



- Running time : 293 min
- R.R.C : 19.3

**COMPETITOR**

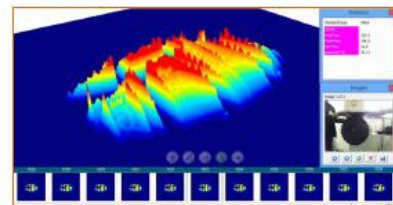
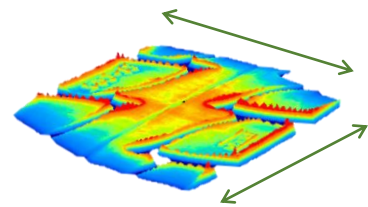
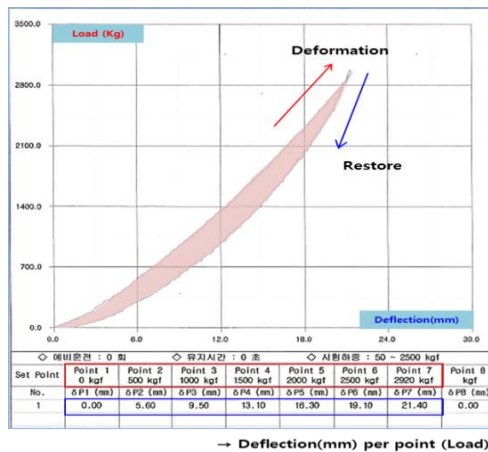


- Running time : 288 min
- R.R.C : 21.7



# 7-2 COMFORT & STABILITY

## Dynamic & Static Property



### WIDE TREAD PROFILE

- ✓ Increases stability and all-surface grip
- ✓ Safer in high-lift and cornering situations

### CONTINUOUS CENTER LUG

- ✓ Reduces vibration which lowers heat build-up and increases lifespan
- ✓ Increases operator comfort and slows wear on driveline components

\*Lower is better

Vibration\*

Noise\*

Hysteresis\*

■ NEXEN    ■ Competitor

